

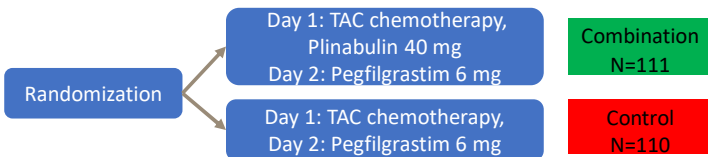
# Impact of Adding Plinabulin to Pegfilgrastim for the Prevention of Chemotherapy Induced Neutropenia on Patient Quality of Life (QoL)

D. Blayney<sup>1</sup>, Y. Le Lorier<sup>2</sup>, D. Mitchell<sup>3</sup>, L. Huang<sup>2</sup>, R. Mohanlal<sup>2</sup>

<sup>1</sup>Department of Oncology, Stanford University, Stanford, CA, United States of America, <sup>2</sup>Clinical Research & Development, BeyondSpring Pharmaceuticals, New York, NY, United States of America, <sup>3</sup>Health Economics, Medicus Economics, LLC, Logimétrix Inc, Repentigny, QC, Canada

## BACKGROUND

- Plinabulin is a novel non-G-CSF selective immunomodulating microtubule binding agent developed for the prevention of CIN in conjunction with pegfilgrastim
- A recent phase 3 clinical trial comparing pegfilgrastim to pegfilgrastim + plinabulin in newly diagnosed breast cancer has recently completed



TAC: Docetaxel 75 mg/m<sup>2</sup>, Doxorubicin 50 mg/m<sup>2</sup>, Cyclophosphamide 500 mg/m<sup>2</sup>

- We measure the impact of Quality of Life (QoL) of adding plinabulin to pegfilgrastim as part of Objectives

## METHODS

- QoL was measured using an app downloaded onto patient phones
- All entries were stamped with time and date to monitor compliance
- All questionnaires were completed prior to any study drug administration
- Patient completed the FACT G on Days, -1, 1 8 and 15  
The EQ 5D 5L was completed on Days -1, 1 of every cycle and at end of treatment

## KEY FINDINGS

- The Physical Well being of patients receiving plinabulin + pegfilgrastim was significantly less impacted by TAC compared to pegfilgrastim alone
- Patients also experienced less deterioration from their baseline QoL over the duration of the trial
- Starting at cycle 2, patients recovered to their pre-chemotherapy physical wellbeing levels more rapidly
- Less Pain and less impact on Energy Levels were the driving forces behind these observations

Study Sponsored by:



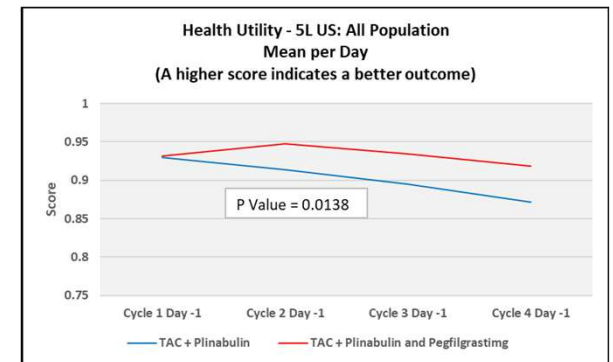
Corresponding Authors:

Douglas W. Blayney, MD - [dblayney@stanford.edu](mailto:dblayney@stanford.edu)

Yvette Le Lorier, MS, MBA - [ylelorier@beyondspringpharma.com](mailto:ylelorier@beyondspringpharma.com)

## RESULTS

### EQ 5D 5L Utility Values



### FACT G – Physical Wellbeing

